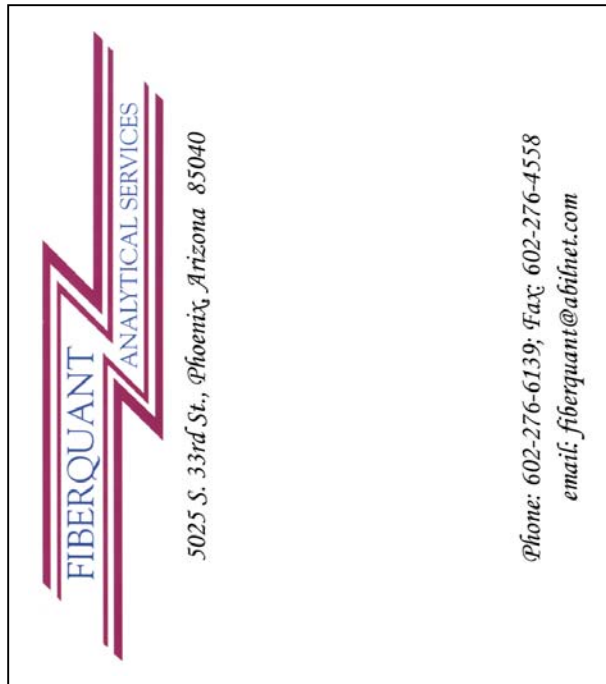


Pricing

PLM multiple layer sample	1-3 days	\$17.00
	6 hours	\$25.50
TEM air sample	24 hours	\$100.00
	6 hours	\$150.00
AHERA clearance (5 inside samples)	24 hours	\$375.00
	6 hours	\$562.50
TEM bulk sample (Chatfield method)	2-3 days	\$100.00
PCM air sample	24 hours	\$12.00
	6 hours	\$18.00

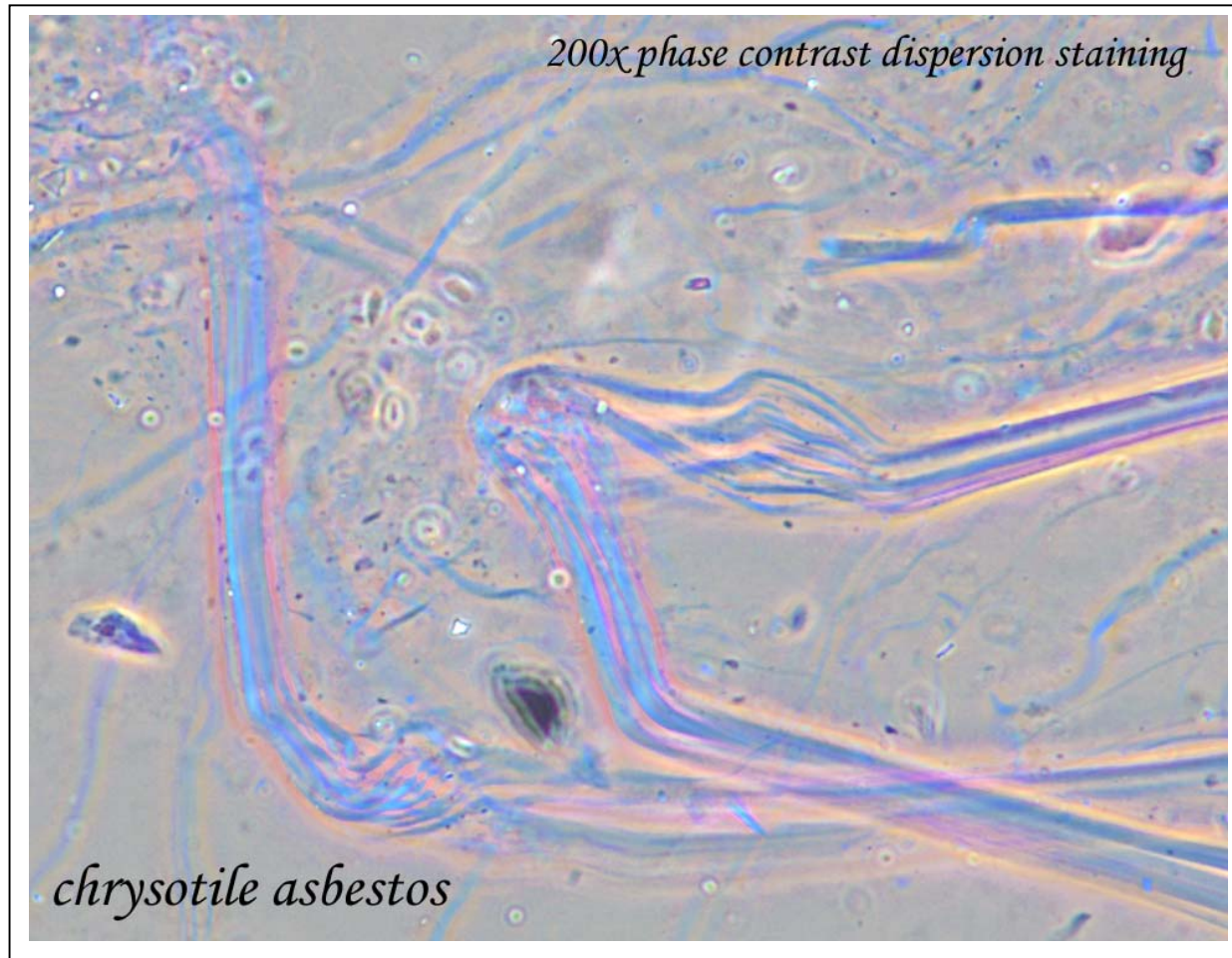
Fiberquant is open from 8 a.m. until 5 p.m. Monday through Friday excluding holidays. Weekend and after-hours services are available upon request for a nominal lab-opening fee. Rates discounted from the above may apply for multiple samples.

Asbestos Services



About us:

- ◇ asbestos and other fiber identification in air samples and building materials
- ◇ airborne fiber quantification using optical microscopy (PCM) or transmission electron microscopy (TEM)
- ◇ NVLAP accreditation (PLM and TEM) since 1989; AIHA accreditation (PCM) since 1991
- ◇ all analysts hold at least a bachelor's degree in geological science
- ◇ competitive pricing



Quality Control and Technical Competence:

We believe in the importance of quality control to monitor our competence to provide consistent, accurate, reproducible data.

- ◇ 10% of all samples are re-analyzed; bulk re-analyses always by a different analyst
- ◇ reference samples are analyzed daily (PCM) and weekly (PLM) by all analysts
- ◇ mounting as well as reading is performed by degreed scientists

Why we are different than other laboratories:

- ◇ We have one of the most stringent QA/QC programs in the industry – analysis cannot proceed until all components of the system are in control.
- ◇ All analysts are well trained and highly compensated, resulting in low turnover and high experience.
- ◇ We never compensate analysts on the basis of speed or quota, but rather on their quality and experience.
- ◇ We encourage and support continuing education, professional memberships, and conference attendance for all technical staff.
- ◇ We do not train, consult or do field work. Our sole goal is provide scientifically defensible data.
- ◇ We test all layers of a building material, including paint (see illustration below).
- ◇ We automatically point-count friable bulk samples estimated to contain $\leq 1\%$ asbestos to keep our clients in NESHAP compliance.
- ◇ We are not the cheapest asbestos lab, simply the best. Our commitment to quality is more important than impressing our clients with pricing.

Brochure, c. 1920

